

The P o i n t



CASCADE CACTUS & SUCCULENT SOCIETY of Washington State

April 2018

Seattle, Washington

Sunday, April 15 — 2:00 pm
Phinney Neighborhood Center
Plants and Animals in Southern Africa
Presented by Steve & Claudia Casebolt

Claudia and Steve spent three months in Southern Africa last fall traveling to six countries. Highlights included lemurs, baobabs, and the spiny forest in Madagascar. Sand dunes on the Skeleton Coast of Namibia, animals in Botswana, birds in Zimbabwe, succulents in the Klein Karoo of South Africa, and people everywhere. Photo shows a *Welwitschia mirabilis* in the Namib Desert - which is in a family of its own - but bears cones, so is very distantly related to a pine tree!





April 2018 President's Corner



Ed Jackson
CCSS President 2018

Meeting Minutes of March 18

Meeting was called to order by President, Ed Jackson at 2:25 pm.

Greetings: Visitors were introduced. Keith visitor - big plant grower who somehow missed our club. Had his collection in the Eastern part of Washington State and had quite a bit of his collection burned by the recent big fires. He is moving to Hawaii and cannot take his plants with him. He has grown agave among other succulents for the last 20 years. He has offered to sell his plants to club members and many of the members did take him up on this.

Treasurers Report: \$10,067 in the bank.

Old Business: Work continues on the new web site. Karen Summers asked for testers/reviewers for the new website. Will send out around March 22nd/23rd. The goal is to have it live on April 1st.

Meeting Minutes Continued

New Business:

Karen Summers brought up TOPSS and asked for volunteers to help with the managing of the activity. Not a complex task - no volunteers yet. This sale is the primary fund raiser for the club and a generally great time as well.

Denise drove by a succulent donned property and wondered why the occupants were not in the club. She considered how could the word be gotten out when opportunities like this come up. She came up with a flyer which could be handed out as a means to market the club. Looking for feedback on the flyer.

Brag Plants: Carol, Steve and George.

COM: *Gymnocalycium bayrianum* 80-90% of the gymnocalyciums are from Argentina.

Who's Who: Steve Casebolt spoke about Graham Charles who has taken about 20 trips to South America. He spent three years on the gymnocalycium book. "Copiapoa" book written by him as well was published in 1998. Copiapoa is another South American plant.

PROGRAM: *Creating Plant Portraits with Photography.* CCSS Member, Alan Kamil gave a presentation on tips for better effects.

Meeting adjourned by 4:45 pm.

Minutes Respectively Submitted by:
Bill Hickey, CCSS Secretary



Copiapoa cinerea f. crist.



Notes from the Librarian.....

This review was previously printed in the April 2008 edition of The Point!

“A World of Plants, Treasures from the Royal Botanic Gardens, Kew” by Heather Angel, 1993. 163 pages.

Save your airfare and visit Kew Gardens through this book. Angel has combined over 150 photographs with easily read text to bring the reader gorgeous flowers, stunning and rare plants, and of course, succulents. Initially the author covers the fascinating history of Kew Gardens, and then creates chapters based on plant habitat. There’s something for everyone in the Temperate Forest, Montane Plants, or Grassland Plants. Of special interest to our club is the Desert Plants section in which Angel has included detailed close ups capturing the beauty of plants such as *Pelecypora aseliformis*, *Furcraea seloana*, and *Lophophora williamsii*.

This book is interesting as a picture book or for more in depth knowledge the reader can delve into the text.

If you would like to check out this book or any other from the club library, contact Mark Mallon at mallon344@gmail.com or - Note a new phone number : 206-948-7478.

Accolades to Karen Summers and new member Chelsea Seydlitz for getting the club’s new fantastic web page up and running. Check it out!

www.cascadecss.org



Cactus of the Month

Cleistocactus colademononis
presented by Jack Zektzer

Aka “monkey’s tail” is native to mountainous areas of south America at above 6,000 feet in elevation. Previously known as *Hildewintera colademononis* Its habitat is epilithic and grows hanging from steep rock faces. Hardy to about 25°.

This *C. polenica* was hybridized by the Voitecks, whom our club visited in British Columbia in 2012.



Should you have one or more of the SOM or COM plants, please bring the plant with you to the April meeting.

Succulent of the Month

Peperomia campyloropa
presented by Karen Summers

Distribution is in Mexico and Northern America. A tuber forming perennial which can be used in dish gardens.

Best situated in diffused lighting. This peperomia produces tiny flowers in dense, slender spikes. Can be propagated by stem, crown or leaf cuttings.



RECAP



Carol Parks brought in this blooming *Graptopetalum pentandrum*

Steve Casebolt uses a fertilizer called ‘Superthrive’. Interestingly, this is the same that was recommended by an arborist that works on Denise’s trees. He also mentioned Maxsea, a kelp based fertilizer for carnivorous plants.

After hearing some of the ideas and techniques of photography which were presented by Alan at the April meeting, your Editor will be trying some new ‘photo alterations’ in future newsletters.

Nick Heiting brought in quite a few of his unique displays. Here is a coconut shell used as a container for cacti.



Jade on a moss covered bark panel.





News from our Members:

Karen Hart is thinking of us on her travels in Arizona



News from the Editor:

Micro chips are being embedded into hundreds of cacti in Saguaro National Park. The chips can be scanned to identify the origin of the cactus. Officials hope that this system will help to deter thieves.

Earth Day is Sunday, April 22.

The Royal Horticultural Society Color Chart is the standard reference for recording plant color. There are about 920 colors in the chart to be matched to flowers. I would love to see how this works with multi-hued variegated petals. To learn more about this chart, see the following web page:

<http://www.rhsshop.co.uk/productdetails.aspx?id=10000006&itemno=MARK0011>

Some of the best skies are seen in Arizona. We agree with Karen that this is a magical place.



Thank you to Karen Summers for forwarding this information:

Check out YouTube's series Around the World in 80 Gardens. Amazing videos of gardens around the world. Here's the link to Season 1 Episode 1.

<https://www.youtube.com/watch?v=ZqIf3Ui6yzw>



Latin corner:

Kleistos - Greek meaning closed. The production of flowers which do not open is called cleistogamy. Cleistogamy appears to be related to environmental conditions: when the environment is harsh, plants are more likely to produce cleistogamous flowers.



Adapted from the CactiGuide.com

Notes from the Editor: Epsom Salts removes salt deposits from pots and the soil. Dissolve one tablespoon per one gallon of water and flush the pot. On the next watering use only water. Thereafter return to the normal fertilization schedule.

After hearing Steve mentioning fertilizers, it got me thinking that perhaps food is what some of my indoor plants need to flower. The outdoor landscape gets plenty of natural composting. Nitrogen can be synthesized from the atmosphere, which is fine for outdoor plants. Our reliance on synthetic nitrogen fertilizer has a list of problems—from using fossil energy to manufacture it, to over nitrogenation of lakes from run-off. But phosphorus and potassium cannot be synthesized— Here are some fertilizers that contain ratios of higher P-K.

- Alaska Morbloom 0-10-10
- Fox Farm Liquid Plant Food .8-3-1
- NuLife Rose Food 6-10-14
- Morcrop Vegetable Food 10-20-20
- Schultz All Purpose plus Water Soluble 20-30-20
- Walt's Bone Meal 5-15-5
- Walt's Fish Meal 8-21-6
- Whitney Farms Bulb Food - 4-6-4
- Whitney Farms Rock Phosphate 0-3-0

Fertilizer break down information is from the King County Local Hazardous Waste Management Program.

Classified

Sales support our club! You can bring items to the sale table at our meetings. All items must have a plant marker with the sellers initials and the price on it.

Proceeds from our plant and paraphernalia sales are distributed 20% to the club and 80% to the seller.

Do you have extra plants, cuttings, seeds or related items like pots or gardening books, to sell or are you searching for something specific? Perhaps our club can help. Let Denise know to post it for you in the newsletter.

e-mail: dhawk96@comcast.net

Keith thanks everyone for support on his plants' sales! He will bring his remaining plants to the neighborhood sale in West Seattle on April 28.

After purchasing so many plants one could easily identify with this saying seen in a shop: "I'm so excited, I nearly wet my plants." by Jacob O'Neal

Plant Shows & Sales

Henry Shaw Cactus & Succulent Society
16th Biennial Mid-States Cactus & Succulent
Conference

St. Louis, Missouri - June 21-24

www.hscactus.org/mid-states

=====

Portland Expo Center
April 14-15 10 am - 3pm

www.hardyplantsociety.org/hortlandia



Looking Forward to:

Point Defiance

May 20 - 10 am

If you haven't let Denise know of your attendance, please send her an e-mail. The docent would like a head count and the club has to send payment before May 1.

Note earlier start time of 10:00 am

Touring Tacoma Gardens

Plant Shows & Sales

Spring Garden Show & Plant Sale
Puyallup Fairgrounds
110 9th Avenue Southwest
Fri, April 20, 10 am - 10 pm

Vancouver Island Rock & Alpine Garden
Society Show & Sale
2625 Arbutus Road, Victoria, BC
Fri, April 20, 1 pm - 8 pm

Chelan Earth Day Fair
117 East Wapato Avenue
Sat, April 21, 9 am - 4 pm

Seattle African Violet Society & Puget Sound
Gesneriad Society Annual Show & Sale
Wallingford Senior Center
4649 Sunnyside Ave. N. #140, Seattle
April 21, 9:30 am - 4 pm

Plant and Art Sale
6547 49th Ave. SW, Seattle
April 28, 9 am - 3 pm

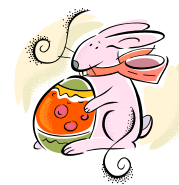
CCSS Programs for 2018

- April 15** **Plants & Animals in Southern Africa**
Steve & Claudia Casebolt
- May 20** **Field Trip - Tacoma**
- June 17 "Baja California: a Botanist's
Natural History" Ernesto Sandoval
- July 22 Behind the Scenes at the
Conservatory
- August 19 Club picnic
Steve & Claudia Casebolt
- September 8 & 9 Club Plant Sale TOPSS
- Oct 21 Highlights of the National
Conference in Tempe - Ed Jackson
- November 18 European Succulents
Karen Summers
- December Festive Feast - TBD
Location TBA

Traveling?

The Denver Botanical Gardens, located at 1007 York St., Denver, CO offers free behind the science tours every 1st and 3rd Fridays at 1pm. The tour, held in the herbarium takes 30 minutes.

www.botanicgardens.org/events/behind-science-explore-natural-history-collections-0



Check out the Cactus and Succulent Plant Mall for listings of clubs in other areas:

<http://www.cactus-mall.com/clubs.html>

The Point

Monthly Newsletter
of the
**CASCADE
CACTUS & SUCCULENT
SOCIETY**
of Washington State

CCSS
P.O. Box 55593
Shoreline, WA 98155

CC&SS Web Site:
www.cascadecss.org

FIRST CLASS MAIL

TO



Membership dues are \$30.00 per year for those who receive 'THE POINT' newsletter by US Mail (snail mail). Dues remain at \$20.00 for those who elect e-mail delivery. Make your check payable to CCSS and mail to:

CCSS Membership Dept.
Bill Hickey
P.O. Box 55593
Shoreline, WA 98155

The purpose of this newsletter is to provide and exchange information about member events, tours, networking opportunities, and to share your experiences and knowledge.

Unless noted as off-site, meetings are held at the Phinney Center 6532 Phinney Avenue North, Seattle <http://phinneycenter.org/about/directions.html>

CCSS is an affiliate of the Cactus & Succulent Society of America (CSSA) <http://cssainc.org/>

April 2018

The Point